

CLERK'S RECORDING CERTIFICATE

I, MARSHA STILLER, CLERK OF THE CIRCUIT COURT OF MARTIN COUNTY, FLORIDA, HEREBY CERTIFY THAT THIS PLAT WAS FILED FOR RECORD IN

PLAT BOOK 14, PAGE 19, MARTIN COUNTY, FLORIDA, PUBLIC RECORDS THIS

7th DAY OF NOV., 1996

MARSHA STILLER, CLERK OF THE CIRCUIT COURT MARTIN COUNTY, FLORIDA.

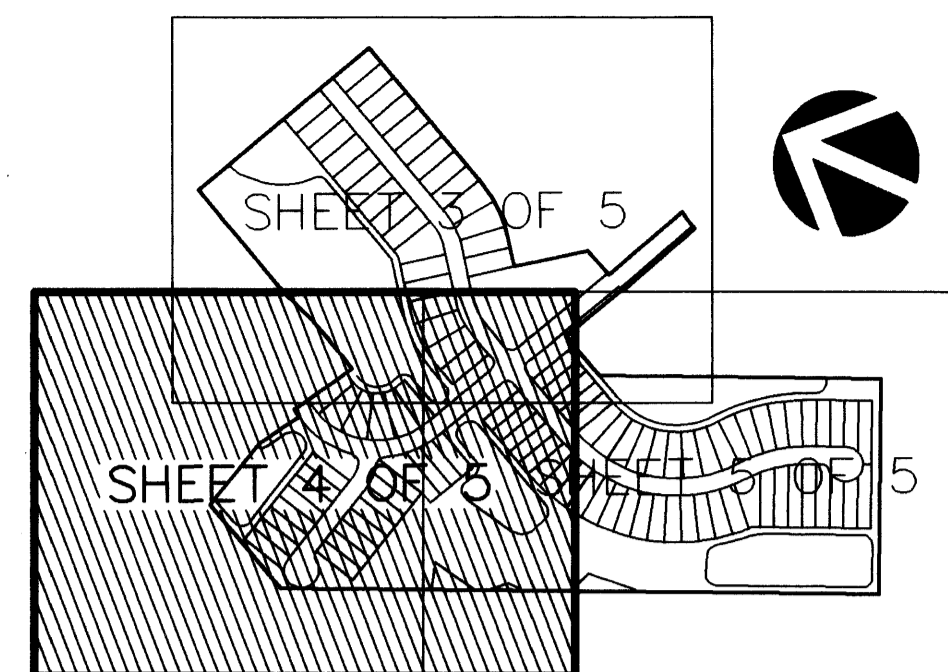
FILE NUMBER 1203013 BY Charlotte B. Wiley DEPUTY CLERK

SUBDIVISION PARCEL CONTROL NO.

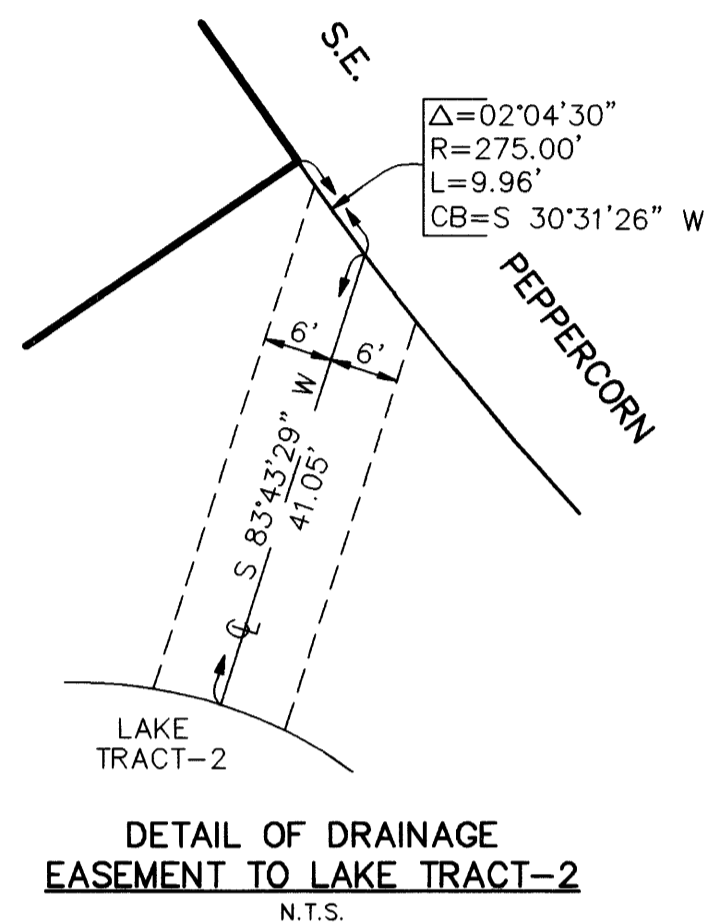
DOUBLE TREE PLAT NO. 6, A P.U.D.

"A PLAT OF PHASE IIIA" BEING A PARCEL OF LAND LYING IN SECTIONS 1, 2, 11 AND 12, TOWNSHIP 39 SOUTH, RANGE 41 EAST,

MARTIN COUNTY, FLORIDA JULY, 1996



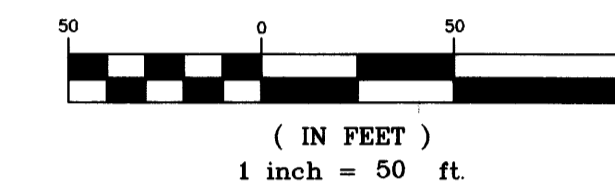
SHEET INDEX



DETAIL OF DRAINAGE EASEMENT TO LAKE TRACT-2
N.T.S.



GRAPHIC SCALE

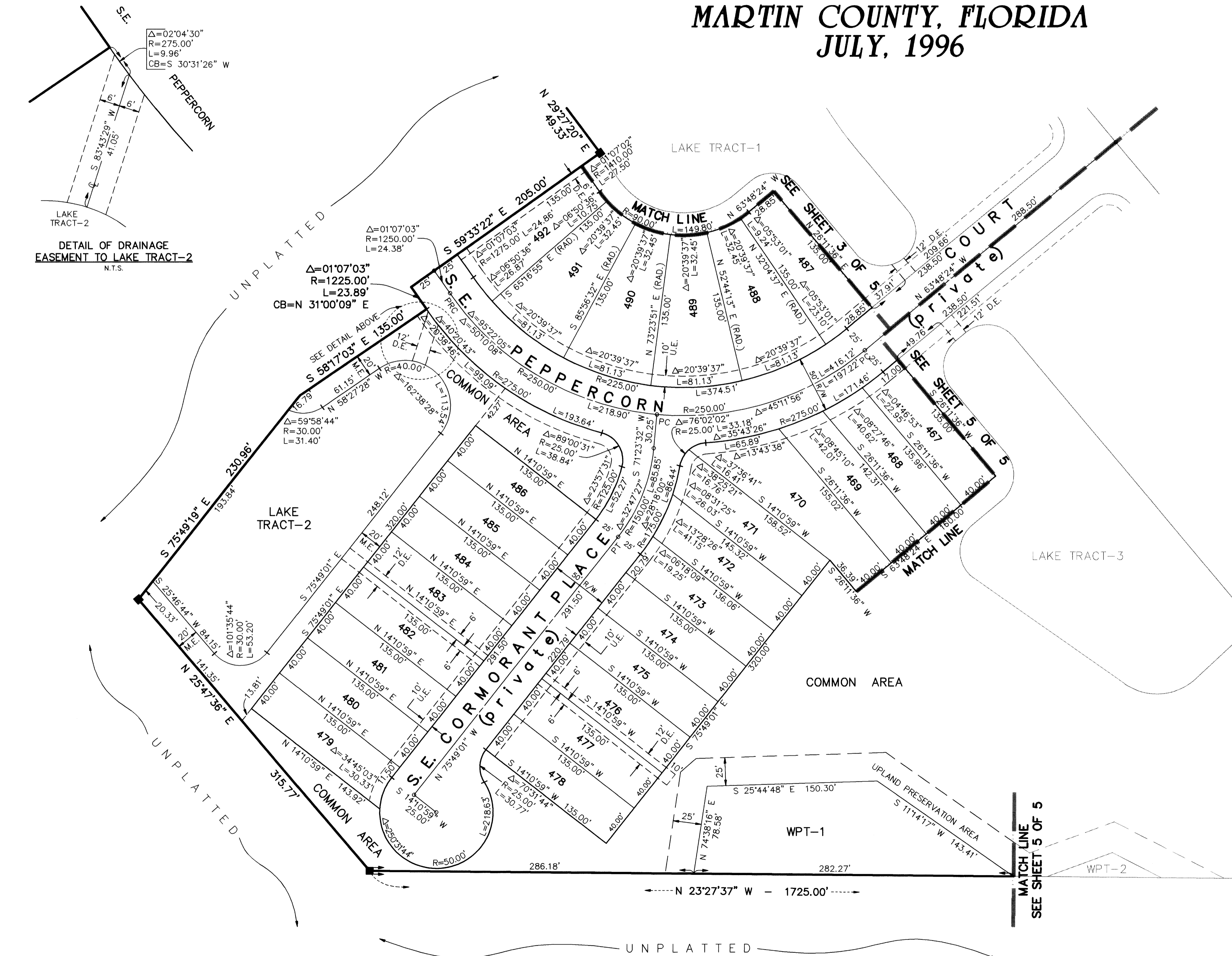


LEGEND

- = SET PERMANENT CONTROL POINT (PCP)
- = P.K. & WASHER LABELED "LB 4108"
- = FOUND PERMANENT REFERENCE MONUMENT (PRM) 4"x4" CONCRETE MONUMENT WITH DISK LABELED "GCY INC. P.R.M. LB 4108, PSM 4130"
- = SET PERMANENT REFERENCE MONUMENT (PRM) 4"x4" CONCRETE MONUMENT WITH DISK LABELED "GCY INC. P.R.M. LB 4108, PSM 4130"
- ✦ = SECTION CORNER
- ✦ = QUARTER CORNER
- U.E. = UTILITY EASEMENT
- D.E. = DRAINAGE EASEMENT
- M.E. = MAINTENANCE EASEMENT
- R = RADIUS
- L = ARC LENGTH
- Δ = DELTA
- RAD. = RADIAL LINE
- CB = CHORD BEARING
- PSM = PROFESSIONAL SURVEYOR AND MAPPER
- LB = LICENSED BUSINESS
- WPT = WETLAND PRESERVE TRACT

SURVEYOR'S NOTES

- 1) THIS PLAT, AS RECORDED IN ITS ORIGINAL FORM IN THE PUBLIC RECORDS, IS THE OFFICIAL DEPICTION OF THE SUBDIVIDED LANDS DESCRIBED HEREON AND WILL IN NO CIRCUMSTANCES BE SUPPLANTED IN AUTHORITY BY ANY OTHER FORM OF THE PLAT, WHETHER GRAPHIC OR DIGITAL.
- 2) THERE MAY BE ADDITIONAL RESTRICTIONS THAT ARE NOT RECORDED ON THIS PLAT THAT MAY BE FOUND IN THE PUBLIC RECORDS OF THIS COUNTY.
- 3) THERE SHALL BE NO BUILDING OR ANY OTHER KIND OF CONSTRUCTION, OR PLACEMENT OF TREES OR SHRUBS ON DRAINAGE EASEMENTS.
- 4) BEARINGS SHOWN HEREON ARE REFERENCED TO THE CENTERLINE OF S.E. PEPPERWOOD COURT AS SHOWN ON DOUBLE TREE PLAT NO. 4, A P.U.D., AS RECORDED IN PLAT BOOK 13, PAGE 63, PUBLIC RECORDS OF MARTIN COUNTY, FLORIDA. SAID LINE BEARS NORTH 64°41'06" WEST.



GCY
INCORPORATED
CIVIL ENGINEERS / LAND SURVEYORS
1505 S.W. MARTIN HIGHWAY P.O. BOX 1489
PALM CITY, FLORIDA 34991 (407-286-8083)
5601 CORPORATE WAY, SUITE 314,
WEST PALM BEACH, FLORIDA 33407 (407-697-3687)